

ERBIUM-DOPED GLASS LASER

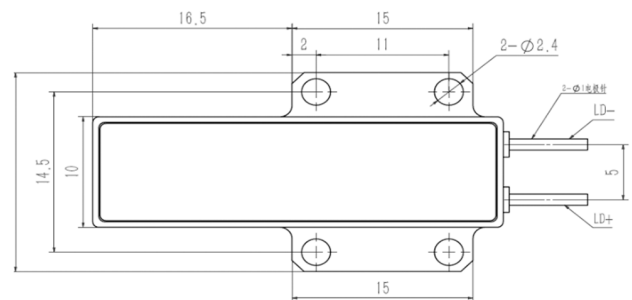
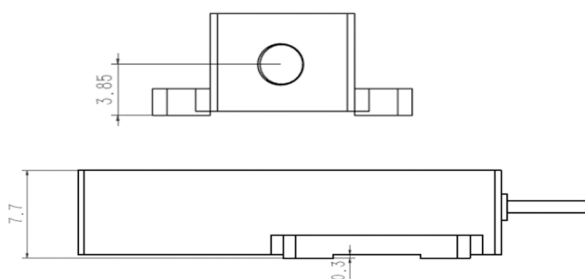
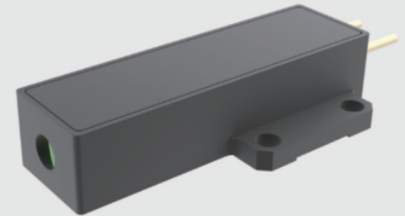
Features :

- Human eye safety
- Small size and light weight
- High photoelectric conversion efficiency
- Adapt to the harsh operating environment

Applications :

- Laser Ranging
- LIDAR
- Laser Communication

LM-1535-P-A1



PARAMETERS

	LM-1535-P100-A1	LM-1535-P200-A1	LM-1535-P300-A1	LM-1535-P400-A1
Wavelength			1535nm	
Pulsed width (FWHM)			3ns ~ 6ns	
Pulsed energy	100μJ	200μJ	300μJ	400μJ
Peak power	25kw	50kw	70kw	80kw
Energy stability			≤5%	
Beam-divergence angle			≤12 mrad	
Working voltage			2V	
Working current	7A	12A	12A	14A
Working frequency			1Hz ~ 10Hz	
Pulsed width			1ms ~ 2.5ms	
Working temperature			- 40°C ~ 60°C	
Storage temperature			- 50°C ~ 70°C	
Life time			10,000,000 times	
Weight			<10g	

NOTE

1. Anti-static measures must be taken during transportation, storage and use.
2. Laser diode pins need to be protected by connecting short lines between them.
3. Laser window to ensure clean and pollution-free.
4. Use constant-current power supply to avoid peaks and surges when working
5. The laser must be installed reliably when working.
6. Follow the LumiSpot operating instruction manual.
7. For other questions, please contact us.

