

ERBIUM-DOPED GLASS LASER

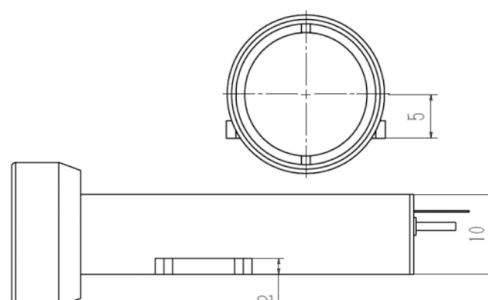
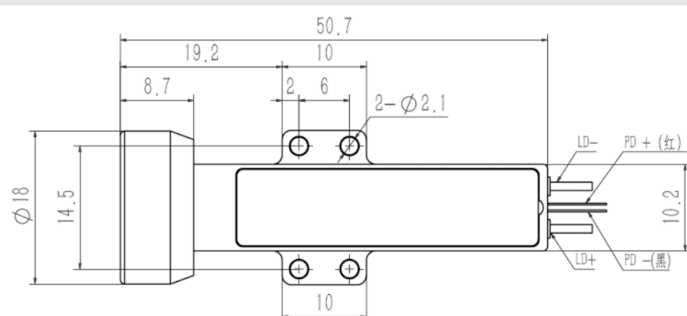
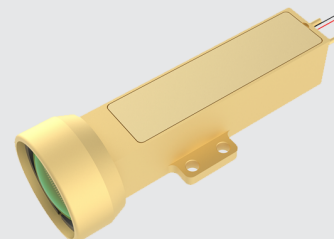
Features :

- Human eye safety
- Small size and light weight
- High photoelectric conversion efficiency
- Adapt to the harsh operating environment

Applications :

- Laser Ranging
- LIDAR
- Laser Communication

LM-1535-P40-C7-0.5



PARAMETERS

LM-1535-P40-C7-0.5

Wavelength	1535 nm
Pulsed width (FWHM)	3ns ~ 5ns
Pulsed energy	40uJ
Peak power	10kw
Energy stability	≤5%
Beam-divergence angle	≤ 0.5 mrad
Working voltage	2V
Working current	3A
Working frequency	1000Hz
Pulsed width	0.2 ms ~ 0.4 ms
Working temperature	- 40°C ~ 60°C
Storage temperature	- 50°C ~ 70°C
Life time	10,000,000 times
Weight	<30g

NOTE

1. Anti-static measures must be taken during transportation, storage and use.
2. Laser diode pins need to be protected by connecting short lines between them.
3. Laser window to ensure clean and pollution-free.
4. Use constant-current power supply to avoid peaks and surges when working
5. The laser must be installed reliably when working.
6. Follow the LumiSpot operating instruction manual.
7. For other questions, please contact us.

