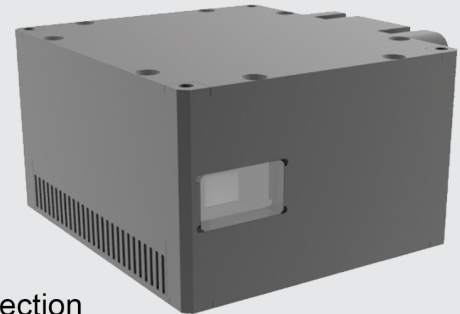


INTEGRATED SINGLE LASER-LINE

Features :

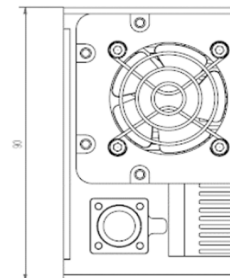
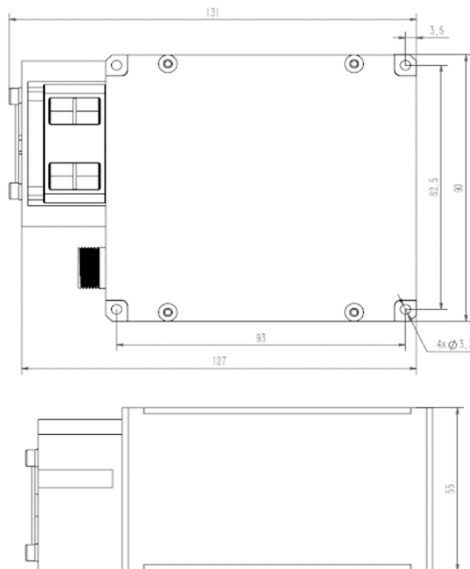
- Compact design
- Wide temperature stable operation
- Light spot uniformity
- Adjustable output laser power
- High power structured light laser
- Adapt to the requirements of outdoor environment
- Customization requirements

LGI - XXX - CX - DXX - XX - DC24 - A



Applications :

- 3D reconstruction
- Industrial detection
- Road surface detection
- Logistics volume detection
- Railway track, vehicle, pantograph detection



The Graph of Light Spot Output :



Technical Data

PARAMETERS	LGI - XXX - CX - DXX - XX - DC24 - A
Output power	Continuous mode 15W / Pulse mode 13W
Center wavelength	808 nm / 915 nm
Wavelength variation range	±10 nm
Sector angle degree	15°/30°/60°/90°/110° (Customizable)
Line width	0.5mm - 2.0mm
Operating voltage	DC12V-24V
Power Consumption	<36W
Operating mode	Continuous / Pulse(1-50KHZ)
Laser control mode	TTL
Power control	485 Communication protocols
Temperature protection	Support
Operating temperature	- 30 ~ 50°C
Storage temperature	- 40 ~ 70°C
Heat dissipation mode	Air
Dimension	106*90*55mm

NOTE

1. Ensure that the light outlet is unobstructed and avoid window contamination.
2. Please apply a layer of thermal grease on the bottom of the module and the mounting surface of the body to better dissipate heat.
3. Avoid looking directly at the laser output to prevent laser damage to human eyes.
4. Follow the LumiSpot operating instruction manual.
5. Any other questions, please contact us.
6. Storage and operation within the required ambient temperature range.

