

Fiber-coupled Laser Diode

Lumispot Tech OEM Laser Diode Solutions



Focus On Fiber Coupled LD

Product Series

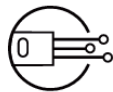
2W~50W 525nm Green Laser
790nm ~ 792nm Fiber-coupled Laser
808nm~888nm Fiber-coupled Laser
915nm ~ 976nm Fiber-coupled Laser



High-specification
packaging technology



High environmental
adaptability



Integrated
Optical design



Lightweight
Materials



Efficient
Heat dissipation



OEM Service
Available

Use of Fiber-Coupled Lasers as Pump Sources for Fiber Lasers

915nm and 976nm Fiber Coupled LD as the pump source for
1064nm~1080nm fiber laser.



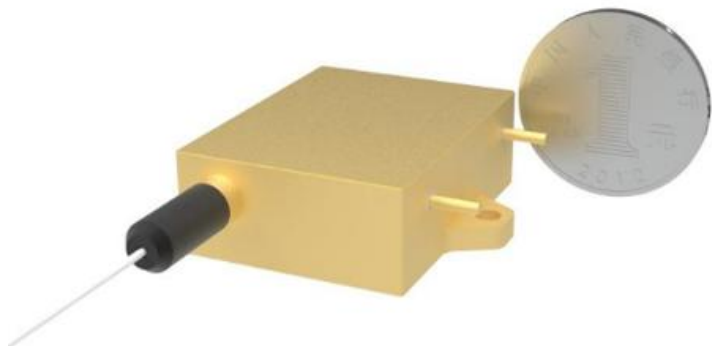
Fiber coupled laser diode with 940nm as pump source of 1550nm fiber laser

In the realm of 1550nm fiber lasers, fiber-coupled lasers with a 940nm wavelength are commonly used as pump sources. This application is particularly valuable in the field of laser LiDAR.



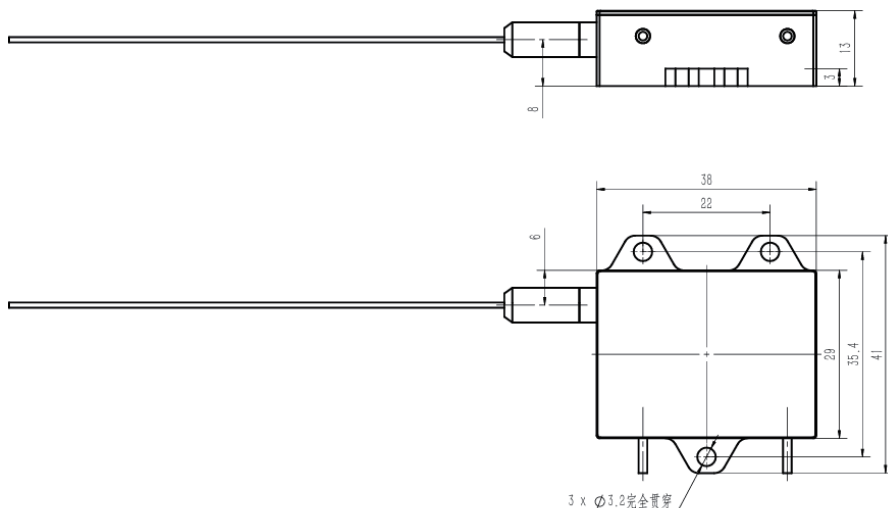
525nm Green Laser

Technical Datasheet



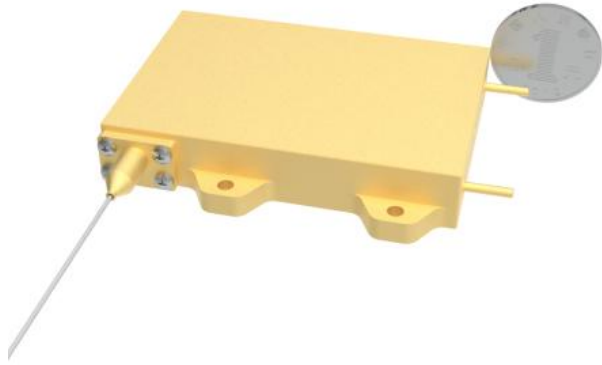
| | | | | | | | | | Unit |
|---|--------------------------|----------------------|----------------------|------------------------|--------------------------|-----------------------|------------------------|------------------------|------|
| Central Wavelength | 525 | 525 | 525 | 525 | 525 | 525 | 525 | 525 | nm |
| Power | 2 | 3.2 | 4 | 6 | 8 | 10 | 25 | 50 | W |
| 95% Power | 0.21 | 0.2 | 0.2 | 0.2 | 0.2 | 0.21 | 0.21 | 0.21 | NA |
| Operating Current | ≤2 | ≤2 | ≤2 | ≤2 | ≤2 | ≤2 | ≤2 | ≤2 | A |
| Operating Voltage | 12 | 18 | 22 | 33 | 50 | 53 | 127 | 308 | V |
| Electro-Optical Efficiency | ≥12.5 | ≥12.5 | ≥12.5 | ≥10 | ≥9 | ≥12 | ≥12 | ≥12 | % |
| Fiber Core Diameter | 60 | 50 | 50 | 60 | 60 | 105 | 105 | 200 | μm |
| Fiber Numerical Aperture (NA) | 0.22 | 0.22 | 0.22 | 0.22 | 0.22 | 0.22 | 0.22 | 0.22 | NA |
| Fiber Length | 0.3 | 1 | 1 | 0.3 | 0.3 | 2 | 2 | 1 | m |
| Sheath Diameter | 0.9 | 0.9 | 0.9 | 0.9 | 0.9 | 0.9 | 3 | 3 | mm |
| Output End Type | FC | FC | FC | FC | FC | FC | FC | FC | / |
| External Dimensions (excluding nozzle, pins) | L:32.3 W:25 H:15.2 | L:32 W:29 H:10 | L:38 W:29 H:13 | L:45 W:34 H:11.1 | L:58 W:43.9 H:15.6 | L:120 W:42 H:24 | L:160 W:100 H:40 | L:225 W:118 H:31 | mm |

*All of the parameters can be customized as demand.



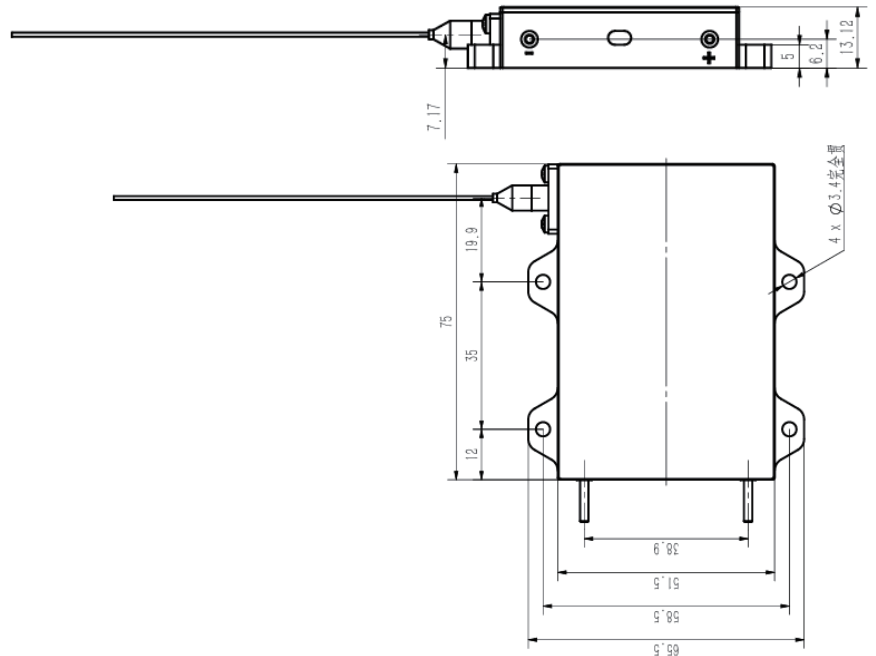
7xx Fiber-coupled Laser Diode

Technical Datasheet



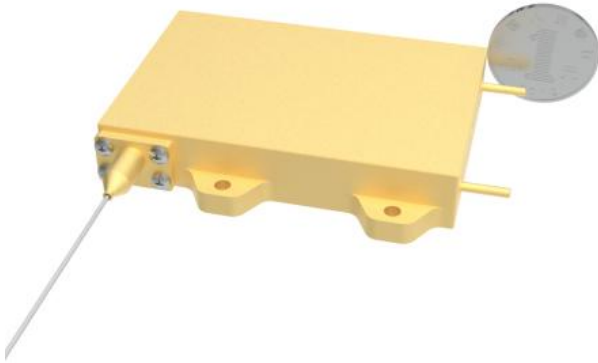
| | | | | | | Unit |
|--|----------------------|-------------------------|--------------------------|---------------------------|---------------------------|-------|
| Center Wavelength | 790 | 792 | 792 | 792 | 792 | nm |
| Power | 25 | 50 | 75 | 100 | 150 | W |
| Spectral Width | 5 | 5 | 5 | 5 | 5 | nm |
| 95% Power | 0.15 | 0.18 | 0.2 | 0.16 | 0.18 | NA |
| Temperature Drift Coefficient | 0.3 | 0.3 | 0.3 | 0.3 | 0.3 | nm/°C |
| Return Loss Isolation Range | 1850-2100 | | | | | nm |
| Operating Current | 10 | 10 | 10 | 10 | 10 | A |
| Operating Voltage | ≤6 | 12 | 17 | 24 | 33 | V |
| Electro-Optical Efficiency | ≥45 | ≥45 | ≥45 | ≥45 | ≥45 | % |
| Fiber Core Diameter | 200 | 200 | 200 | 135 | 135 | μm |
| Numerical Aperture of the Fiber | 0.22 | 0.22 | 0.22 | 0.22 | 0.22 | NA |
| Fiber Length | 1.5 | | | | | m |
| Sheath Diameter | 0.9 | | | | | mm |
| Output Connector Type | SMA905 | | | | | / |
| Dimensions (excluding nozzle and pins) | L:32 W:29 H:10 | L:58 W:37 H:14.72 | L:58 W:43.9 H:15.6 | L:75 W:51.5 H:13.12 | L:75 W:51.5 H:13.12 | mm |

*All of the parameters can be customized as demand.



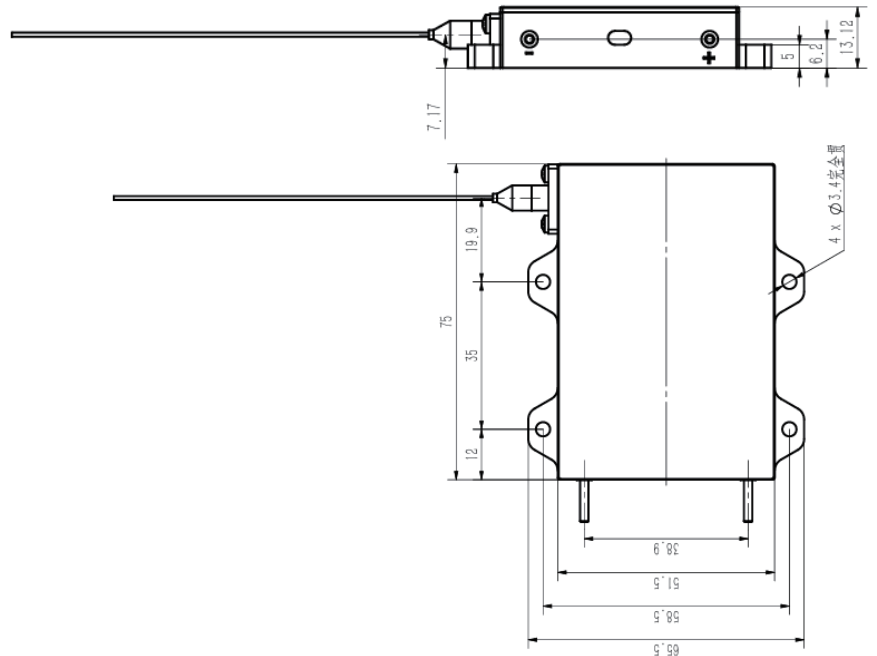
8xx Fiber-coupled Laser Diode

Technical Datasheet



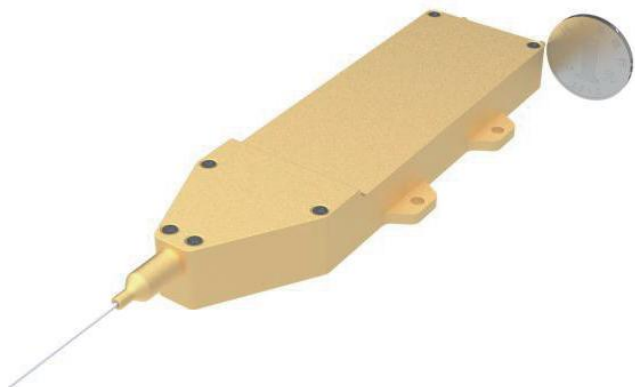
| | | | | | | | | | Unit |
|--|----------------------|----------------------|-------------------------|--------------------------|--------------------------|---------------------------|---------------------------|---------------------------|-------|
| Center Wavelength | 808 | 808 | 808 | 808 | 808 | 808 | 878.6 | 888 | nm |
| Power | 25 | 30 | 50 | 75 | 110 | 150 | 175 | 175 | W |
| Spectral Width | 5 | 5 | 5 | 5 | 5 | 5 | 1 | 1 | nm |
| 95% Power | 0.15 | 0.15 | 0.18 | 0.2 | 0.2 | 0.18 | 0.18 | 0.18 | NA |
| Temperature Drift Coefficient | 0.3 | 0.3 | 0.3 | 0.3 | 0.3 | 0.3 | 0.015 | 0.02 | mm/°C |
| Return Loss Isolation Range | 1030-1200 | | | | | | | | nm |
| Operating Current | 10 | 15 | 10 | 10 | 15 | 10 | 11.5 | 13 | A |
| Operating Voltage | ≤6 | ≤6 | 12 | 17 | 17 | 33 | 30 | 28 | V |
| Electro-Optical Efficiency | ≥45 | ≥45 | ≥45 | ≥45 | ≥45 | ≥45 | ≥51 | ≥50 | % |
| Fiber Core Diameter | 200 | 400 | 200 | 200 | 200 | 135 | 200 | 200 | μm |
| Numerical Aperture of the Fiber | 0.22 | | | | | | | | NA |
| Fiber Length | 1.5 | | | | | | | | m |
| Sheath Diameter | 0.9 | 2 | 0.9 | 0.9 | 0.9 | 0.9 | 0.9 | 0.9 | mm |
| Output Connector Type | SMA905 | | | | | | | | / |
| Dimensions (excluding nozzle and pins) | L:32 W:29 H:10 | L:32 W:29 H:10 | L:58 W:37 H:14.72 | L:58 W:43.9 H:15.6 | L:58 W:43.9 H:15.6 | L:75 W:51.5 H:13.12 | L:75 W:51.5 H:13.12 | L:75 W:51.5 H:13.12 | mm |

*All of the parameters can be customized as demand.



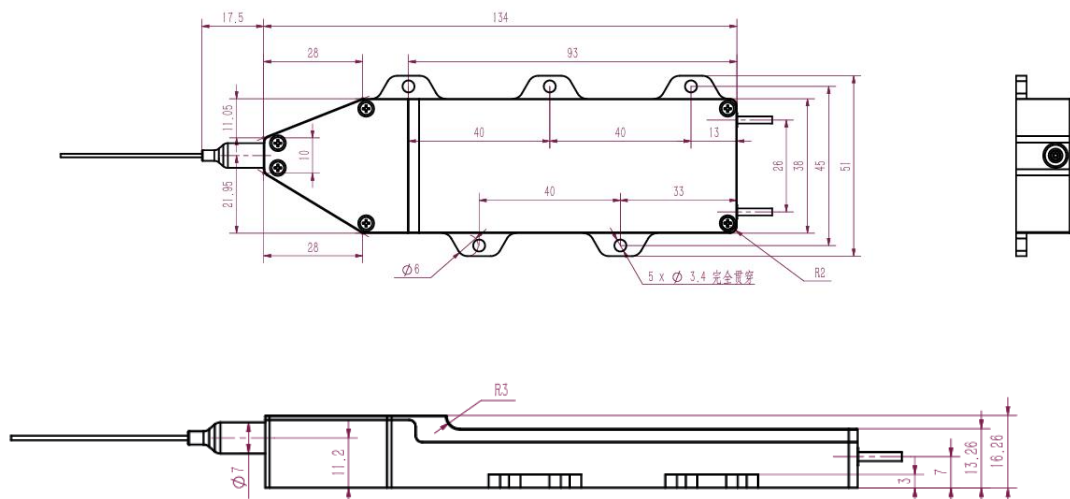
9xx Fiber-coupled Laser Diode

Technical Datasheet



| | | | | | | | | | Unit |
|--|--------------------------|---------------------------|-------------------------|---------------------------|--------------------------|--------------------------|--------------------------|--------------------------|-------|
| Center Wavelength | 915 | 915 | 915 | 976 | 976 | 976 | 976 | 976 | nm |
| Power | 200 | 300 | 700 | 280 | 260 | 370 | 360 | 510 | W |
| Spectral Width | 5 | 5 | 5 | 5 | 1 | 5 | 1 | 1 | nm |
| 95% Power | 0.18 | 0.18 | 0.2 | 0.18 | 0.18 | 0.18 | 0.18 | 0.2 | NA |
| Temperature Drift Coefficient | 0.3 | 0.3 | 0.3 | 0.3 | 0.02 | 0.3 | 0.02 | 0.02 | mm/°C |
| Return Loss Isolation Range | 1030-1200 | | | | | | | | nm |
| Operating Current | 16 | 20.5 | 30 | 18 | 17.5 | 25 | 25 | 29 | A |
| Operating Voltage | 24 | 30 | 50 | 29 | 29 | 29 | 29 | 36 | V |
| Electro-Optical Efficiency | ≥55 | 50 | 49 | 50 | 52 | 52 | 50 | 49 | % |
| Fiber Core Diameter | 200 | 135 | 220 | 135 | 135 | 200 | 200 | 220 | μm |
| Numerical Aperture of the Fiber | 0.22 | | | | | | | | NA |
| Fiber Length | 1.5 | | | | | | | | m |
| Sheath Diameter | 0.9 | | | | | | | | mm |
| Output Connector Type | Tail Fiber Output | | | | | | | | / |
| Dimensions (excluding nozzle and pins) | L:118 W:37 H:15.92 | L:75 W:51.5 H:13.12 | L:165 W:48.5 H:21 | L:75 W:51.5 H:13.12 | L:118 W:37 H:15.92 | L:118 W:37 H:15.92 | L:118 W:37 H:15.92 | L:134 W:38 H:16.26 | mm |

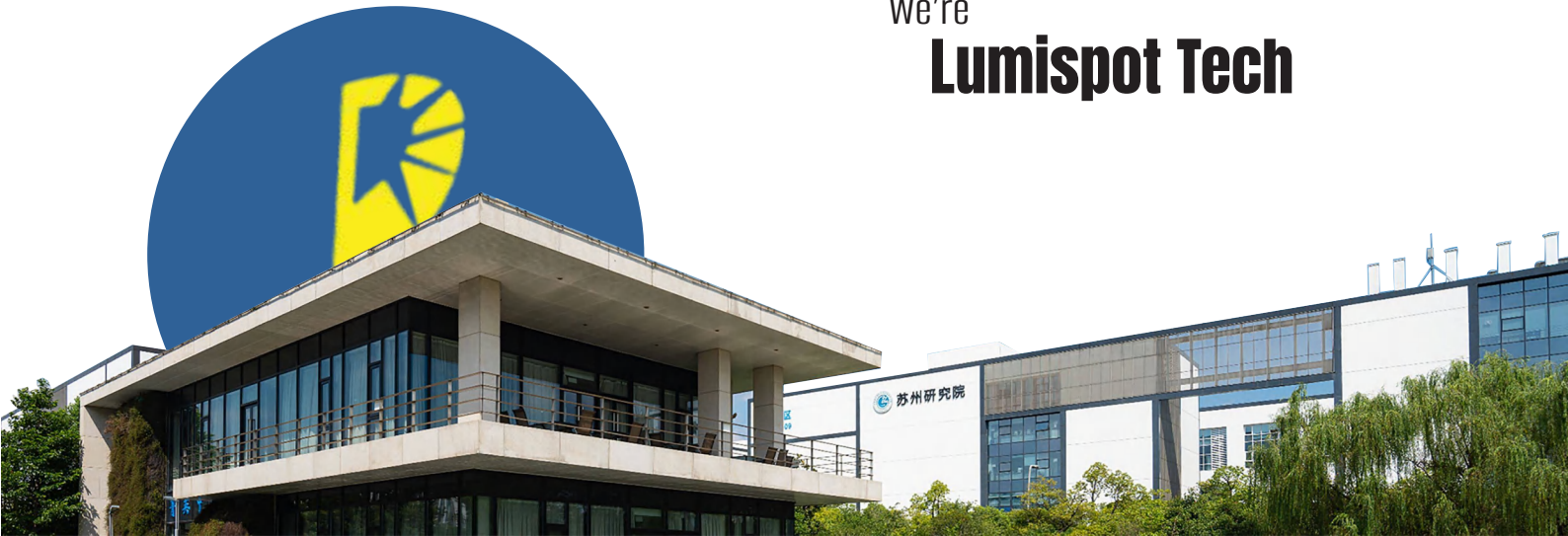
*All of the parameters can be customized as demand.



Company Profile

About Lumispot Tech

We're
Lumispot Tech



¥ 78million
Register Capital

6+
Ph.D

80%
Proportion of Talent

150+
Patents



Founded in 2010, Lumispot Technology Group, with its headquarters in Wuxi, boasts a registered capital of CNY 78.55 million. Our expansive facility covers an area of approximately 25,000 square meters and is powered by a dedicated team of over 500 employees. Over the past 14+ years, Lumispot has emerged as a frontrunner in the specialized field of laser information technology, underpinned by a robust technical foundation.

We specialize in the research and development of laser technology, providing a diverse portfolio of products. This range encompasses laser diodes, erbium lasers, fiber lasers, and solid-state lasers, as well as comprehensive systems including laser rangefinder modules, LiDAR lasers, structured lasers, illumination systems, Fiber Optic Gyro (FOG) components, and dazzlers. Our products find extensive applications across various sectors such as defense and security, LiDAR systems, remote sensing, inertial navigation, and technical research.

Contact

Email: sales@lumispot.cn
Website: www.lumispot-tech.com



Illuminate Future From Laser

We aim to become the global leader in laser special information domain.

