

Vision Inspection System

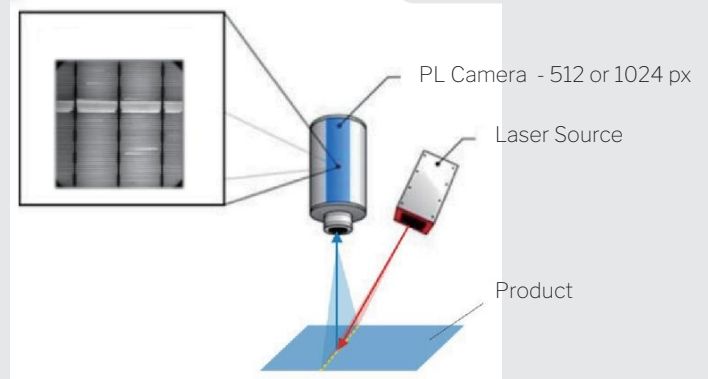
Model : WDE010



√ non-destructive

Photoluminescence (PL) imaging

√ non-contact



01 Compact Design 02 High Parallelism

03 Uniform Light Spot 04 Stable Operation at High and Low Temp.

Single/Multi Line Structured Light Source

Vision Inspection System

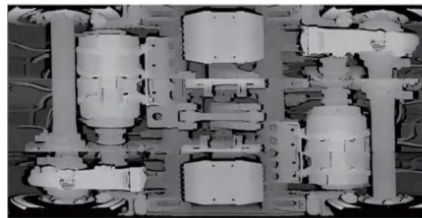
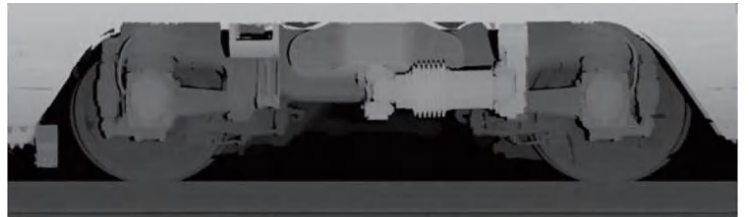
Illumination Laser

Laser Lens



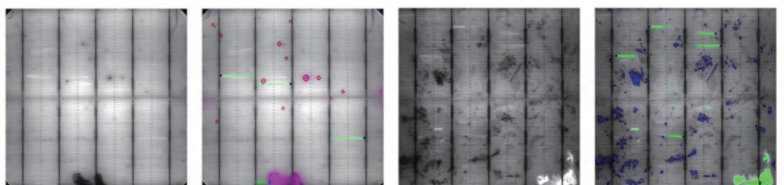
Application:

- 3D Reshaping;
- Rail Wheelset Inspection, Track Inspection;
- Surface Inspection
- Volume Measurement
- Defect Detection;
- Solar Energy Inspection



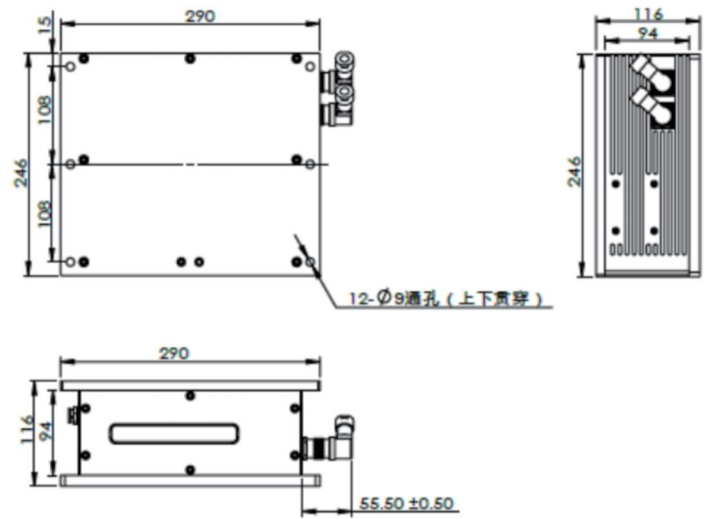
Monocrystalline Solar Cells

Multicrystalline Solar Cells



Vision Inspection System

Technical Datasheet



WDE010

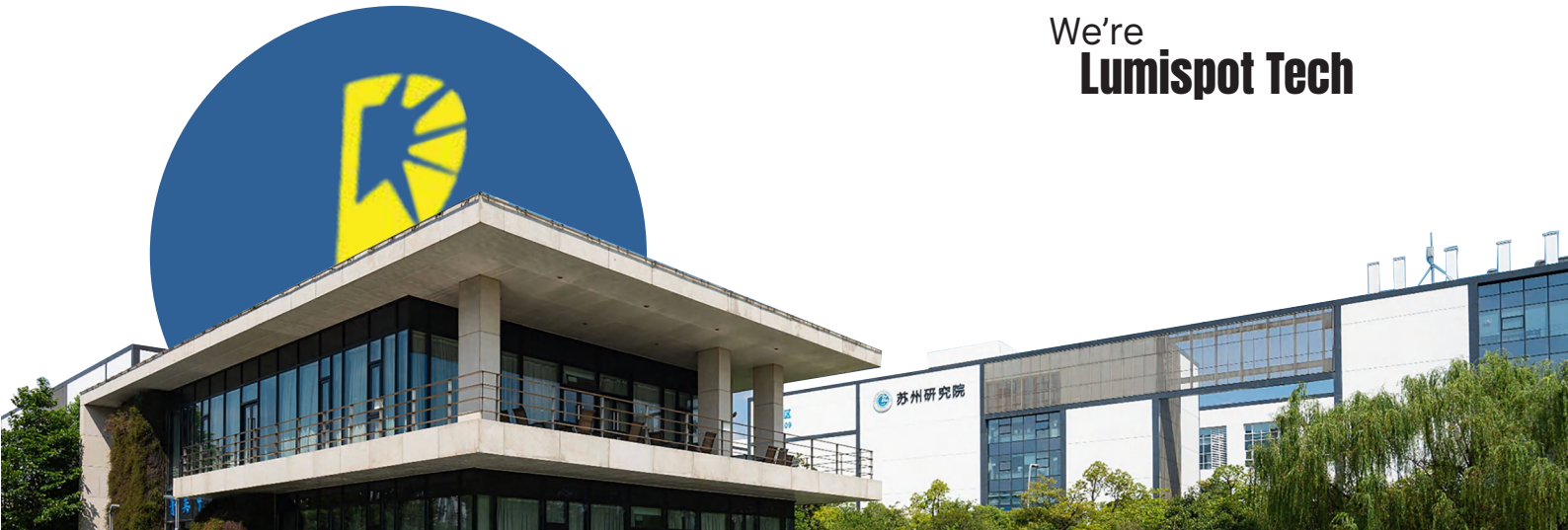
Output Power	30 (Customizable)	W
Wavelength	808/915	nm
Fan Angle, in degrees	35(Customizable)	°
Line Width	10@3.1m(Customizable)	mm
Uniformity	>50%(within 90% angle range)	%
Camera Model	Linear Array Camera	—
Camera Lens Type	Optional	
Operating Voltage	DC24	V
Maximum Power Consumption	≤120	W
Laser Trigger Mode	Continuous/Pulse	—
Maximum Trigger Frequency	100	kHz
Operating Temperature	-30~60	°C
Ambient Humidity	≤80	%RH
Protection Level	IP67	—
Dimensions	252*190*110	mm
Weight	6.15	Kg

NOTE

1. Before using the laser, if there is a blue protective film on the window, please remove the blue protective film before use, and ensure there are no foreign objects on the window.
2. The four-core aviation plug of the laser should be connected according to the above instructions.
3. During transportation, storage, and installation, prevent improper handling such as heavy pressure, severe vibration, and water immersion, as these may cause damage to the equipment.
4. Use a regulated power supply, and avoid peak and surge voltages when operating.
5. When the laser is in operation, avoid direct exposure of eyes or skin to the laser beam.
6. The laser should be used at the rated current and power.
7. The product should not be used in continuous working mode for more than 30 minutes.

Company Profile

About Lumispot



We're
Lumispot Tech

¥78M

Register Capital CNY

6+

Ph.D.

80%

Proportion of Talents

150+

Patents



Located in Wuxi, LumiSpot Technology Group is a leader in laser technology with a strong foundation, having a registered capital of CNY 78.55 million and a large office and production area of about 14,000 square meters. We have expanded our reach with subsidiaries in Beijing (Lumimetric), Xi'an, and Taizhou.

Our expertise lies in laser information technology, offering a wide range of products including laser diode, fiber lasers, solid-state lasers, ranging modules, and various vision inspection systems. Recognized for our innovation, we've been named a High Power Laser Engineering Center and have received numerous awards and national research funding.

Contact

Email: sales@lumispot.cn
Website: www.lumispot-tech.com

- 2010 ●
- 2011 ●
- 2012 ●
- 2013 ●
- 2014 ●
- 2015 ●
- 2016 ●
- 2017 ●
- 2018 ●
- 2019 ●
- 2020 ●
- 2021 ●
- 2022 ●
- 2023 ●
- 2024 ●



**Illuminate Future
From Laser**

We aim to become the global leader in laser special information domain.

