

P30-MR4 Pulsed

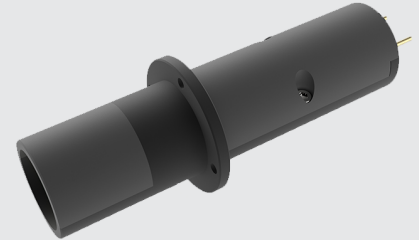
Features :

- Meet the laser communication field design requirements
- Human eyes safety good performance
- Independent development and design,
- quality controllable, patent protection
- Small size, light weight, high stability
- High photoelectric conversion rate
- Adapt to a demanding work environment

Applications :

- Laser ranging
- LIDAR
- Laser communication

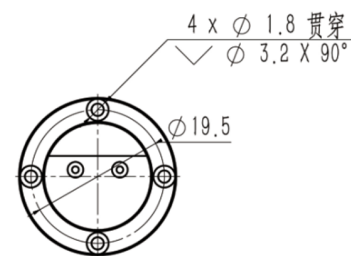
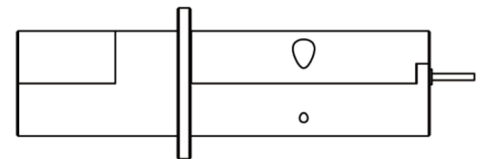
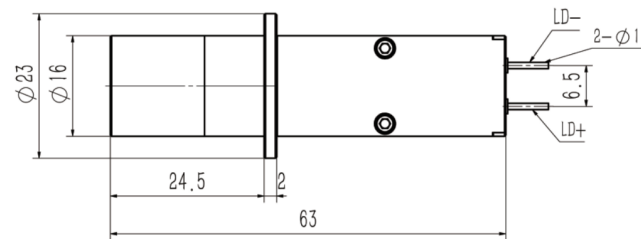
LM-1550-P30-mr4



PARAMETERS

LM-1550-P30-mr4

Wavelength	1550nm
Pulse Width (FWHM)	500ns
Peak Power	10W,20W,30W
Energy stability	≤ 5%
Beam divergence angle	≤ 4mrad
Operating Voltage	16V
Operating Current	50A
Operating frequency	2,000 Hz
Operating temperature	- 40 - 60°C
Storage temperature	- 50 - 70°C
Life time	20,000 h
Weight	< 20 g



NOTE

1. anti-static measures must be taken during transportation, storage and use.
2. The laser diode pins need to be protected by connecting short lines between them.
3. the use of constant current power supply, to avoid peaks and surges when working.
4. laser working temperature, frequency, pulse width, current is strictly prohibited to exceed the range indicated in the specification laser work to ensure reliable installation.
5. laser window to ensure clean and pollution-free, so as not to cause abnormal light.

