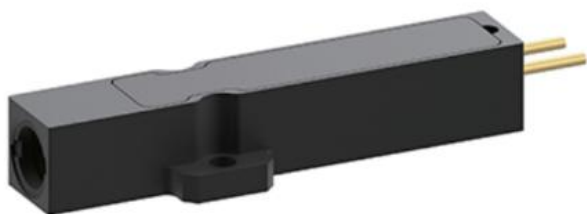


## Erbium Glass Laser Transmitter

ELT100-F10-B0.6



### Technical Specification

#### Optical

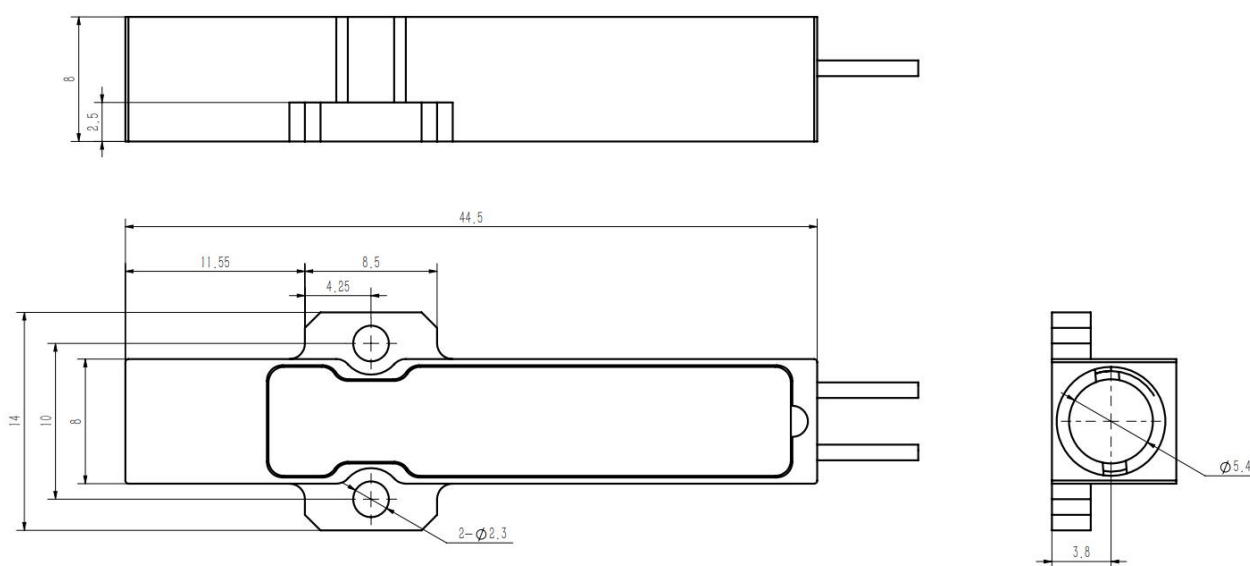
Wavelength, nm	1535±5
Pulse width (FWHM), ns	3~6
Pulse energy, μJ	≥100
Energy stability, %	< 8
Re-frequency, Hz	1-10
Beam quality, (M2)	≤1.5
Light spot (1/e <sup>2</sup> ), mm	8
Beam divergency, mrad	≤0.6

#### LD electricity parameter

Working voltage, V	<2
Working current, A	6
Pulse width, ms	≤2.5

#### Others

Working temperature, °C	-40~+65
Storage temperature, °C	-50~+75
Lifetime	>10 <sup>7</sup> times
Weight, g	≤10



## Notification

- Anti-static measures must be taken during transportation, storage and use.
- Laser diode pins need to be connected to a short route protection.
- Use constant current power supply to avoid peak and surge during operation.
- Laser operating temperature, frequency, pulse width, current is strictly prohibited to exceed the specification of the range.
- Laser work to ensure reliable installation.
- Laser window to ensure clean and pollution-free, so as not to cause light abnormalities.