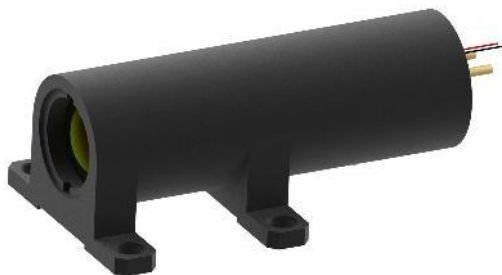


Erbium Glass Laser Transmitter

ELT40-F1000-B0.6



Technical Specification

Optical

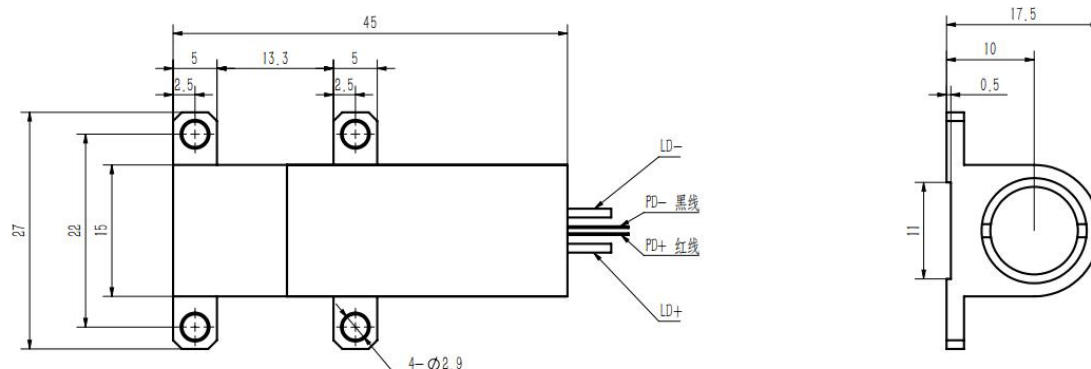
Wavelength, nm	1535±5
Pulse width (FWHM), ns	3~6
Pulse energy, μJ	≥40
Re-frequency, Hz	1000
Beam quality, (M2)	≤1.5
Light spot (1/e ²), mm	≤13
Beam divergency, mrad	0.5~0.6

LD electricity parameter

Working voltage, V	<2
Working current, A	4
Pulse width, ms	≤0.4

Others

Working temperature, °C	-40~+65
Storage temperature, °C	-50~+75
Lifetime	>10 ⁷ times
Weight, g	<30



Notification

- Anti-static measures must be taken during transportation, storage and use.
- Laser diode pins need to be connected to a short route protection.
- Use constant current power supply to avoid peak and surge during operation.
- Laser operating temperature, frequency, pulse width, current is strictly prohibited to exceed the specification of the range.
- Laser work to ensure reliable installation.
- Laser window to ensure clean and pollution-free, so as not to cause light abnormalities.