

QCW DIODE PUMP MODULE

(LMD-2940-Q20000-4-38.1-1-D5H5P4-ST)

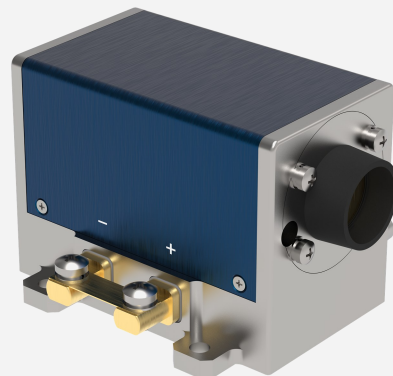
Lumispot

Features

- High power pumping ability
- Excellent beam and stability
- Quasi-continuous wave laser operation
- Compact and reliable design

Applications

- Nano/Pico-second Laser Amplifier
- Medical treatment
- High gain pulse pump amplifier



Optical parameter	Unit	Specification	Remarks
Pump Peak Power	W	≥ 20000	@200A, 25°C
Pump Center Wavelength	nm	979.5 ± 1.5	@25°C
Single Bar Peak Power	W	≥ 200	@200A, 25°C
Bar quantity	pcs	100	–
Crystal rod size	mm	$\varnothing 4 \times 83$	Er_YAG
Luminous height	mm	38.1	–

Electrical parameter	Unit	Specification	Remarks
Operating mode	/	QCW	–
Threshold current	A	≤ 21	–
Operating current	A	≤ 150	–
Operating voltage	V	≤ 220	–
Diode duty cycle	/	$\leq 6\%$	–
Diode pulse width	μs	≤ 500	–
Diode repetition rate	Hz	25~50	–

Another parameter	Unit	Specification	Remarks
Operating temperature	°C	25 ± 5	–
Storage temperature	°C	0~50	–
Volume flow of water	L/Min	8~10	–
Hydraulic pressure	Mpa	0.25~0.4	–

NOTE

1. Power use: Ensure that it is used at the rated voltage and power.
2. The laser must be installed reliably when working.
3. Follow the LumiSource Tech operating instruction manual.
4. For other questions, please contact us.
5. Electrostatic protection: the laser module in transport, storage, use must take appropriate anti-static measures.



We reserve all rights product specifications and descriptions are subject to change.

Products are delivered with a limited warranty only. Please contact our sales representatives for more info.

QCW DIODE PUMP MODULE

Lumispot

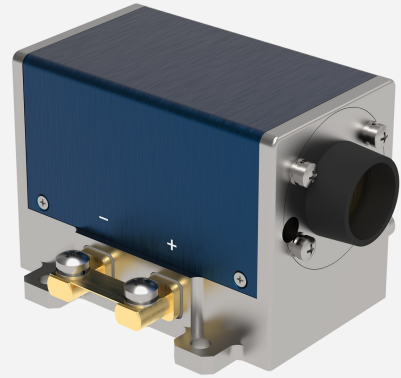
(LMD-2940-Q20000-4-38.1-1-D5H5P4-ST)

Features

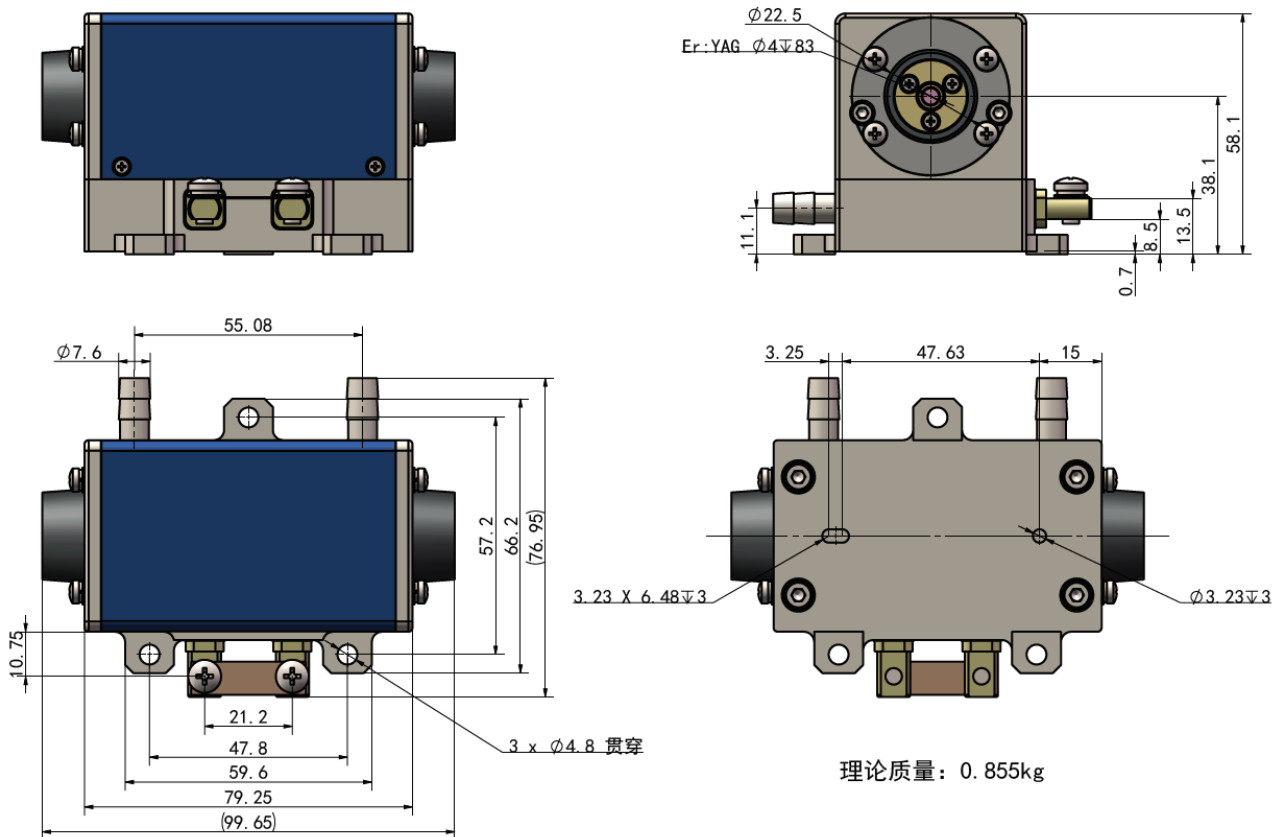
- High power pumping ability
- Excellent beam and stability
- Quasi-continuous wave laser operation
- Compact and reliable design

Applications

- Nano/Pico-second Laser Amplifier
- Medical treatment
- High gain pulse pump amplifier



Structure Size



NOTE

1. Power use: Ensure that it is used at the rated voltage and power.
2. The laser must be installed reliably when working.
3. Follow the LumiSource Tech operating instruction manual.
4. For other questions, please contact us.
5. Electrostatic protection: the laser module in transport, storage, use must take appropriate anti-static measures.



We reserve all rights product specifications and descriptions are subject to change.

Products are delivered with a limited warranty only. Please contact our sales representatives for more info.