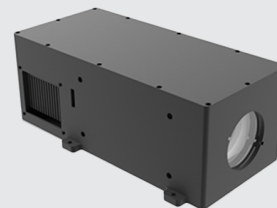


Laser Illumination Light Source

LS-808-CXX-D0330-F400-AC220-ADJ

Product Description:

The LS-808-CXX-D0330-F400-AC220-ADJ is primarily used for long-range nighttime video surveillance auxiliary lighting. It enables video surveillance equipment to capture clear and high-quality night vision monitoring images in dark environments, even under completely dark conditions.



- Safe city, remote monitoring.
- Airborne gimbal.
- Forest fire prevention.

Technical Data

Optic

Output Power, W	3-50W
Center Wavelength, nm	808/915
Wavelength Range, nm	+5
Illumination Angle, degrees	0.3-30°(Customization)
Illumination Distance, m	500-5000

Electrical

Operating Voltage, V	DC24V
Power Consumption, W	< 90
Operating Mode	Continuous/Pulse
Communication Interface	RS 485/TTL

Others

Operating Temperature, °C	-40-50
Operating Environment Temp., %	5-80%RH
Temperature Protection	Laser powers off after 10s of overheating, automatically restarts when temperature stabilizes below 65°C.
Dimensions, mm	Customizable features available.

1. Before use, please read the user manual and follow the operation instructions.
2. Do not disassemble or modify it privately, as it may lead to electric shock, system damage, or fire.
3. During use, be mindful of environmental contamination to prevent dirt on the output port, which can affect performance.
4. This product has a laser safety level of Class V. Do not obstruct the laser light outlet within 3 meters to avoid fire.
5. Direct exposure to the human body, especially the eyes, within 10 meters is strictly prohibited. Prolonged exposure to this intensity of laser light can cause varying degrees of eye damage. Avoid direct skin and eye exposure to the laser beam, and wear appropriate protective eyewear according to the laser wavelength.
6. Avoid direct exposure of the laser beam to volatile or flammable materials.
7. When using, please handle the fragile optical fiber with care, ensuring its safety during assembly, installation, and movement to prevent fiber breakage.
8. Connect connectors strictly according to the user manual; incorrect connections may result in severe damage to the driver board.